

The Escapades Of Daisy

by Michael Donnelly

bridgerun49@gmail.com



MOST EVERYONE at the local club knows that Daisy (name changed to protect the guilty) is my favorite student/partner. She has a great passion for the game, coupled with an uncommon willingness to improve her skills through study. Her progress has prompted me to take some possibly unwarranted pride in my teaching ability. I innocently reason, where might her game be without me? Lately I have been a bit disturbed though, believing that Daisy's improving game may be more a function of her favorite craving, double whipped latte, than any skillful guidance on my part. Hmmm, the mystical powers of caffeine?

Today's game brought this matter to my attention. Daisy, in her usual fashion, arrived just moments before game time. As we sat down to play she mentioned that her morning had been so hectic that she had not had time to eat, let alone collect her thoughts. Her efforts during the first round reflected her frenzied state-of-mind as she proceeded to trump one of my winners on board one, revoked on the second hand, then bid out-of-turn on the last board. None of which is totally out of character for Daisy as she frequently makes the bridge errors that are common to many novices. Nonetheless, such rapid-fire mistakes are exceptional, even for her. At this point I privately speculated that our scoring a 30% game today might be overly optimistic.

As we moved for the second round, Daisy sheepishly muttered, "Sorry pard. Guess I'm a little out of it." Before I could offer a reassuring reply, she withdrew from her handbag a large latte from Starbucks and promptly took a large and loud "gulp" of her pet pleasure. "Ummm, ummm, good!" she almost bellowed, sounding much like one of the old Campbell's Soup Kids. After seating herself at the table she took another slow and steady sip. Now, with a look of new found resolution on her face and her eyes positively twinkling, she boldly pronounced "I think I'm ready for action!"

Hoping for the best I sorted my next hand, which in itself was cause for optimism.

Holding: ♠KQJ108, ♥K85, ♦Q, ♣KQJ10, I began to reach for the 1♠ card in the bidding box when I noticed Daisy placing a 1NT bid on the table. Whew! I almost mimicked Daisy's performance from the last board. Had I acted a second earlier it would have been me bidding out-of-turn.

Well, this certainly put my hand in a new and improved perspective. I chose to bid 2♥, a transfer to spades, intending to show my clubs afterwards. When Daisy accepted my transfer, I began to wonder if bidding 3♣ might only serve to confuse her. Against my better judgment I bid 4♣, ace-asking Gerber.

"Oh, oh," I silently mused, as Daisy's went into a monumentally long huddle, periodically scratching her head, toying with her bidding box and looking skyward, seemingly for inspiration. After an anguished sigh, she reached for her latte and took an enormous swig. Then, with her eyes aglow, she reached into her bidding box and confidently placed the 7♠ card upon the table. Once again I mused to myself, "oh, oh," only this time in spades. To my knowledge, Daisy had never bid a grand slam in her entire life.

After my RHO led the ♥Q, I tabled my dummy, all the while searching Daisy's face for any sign of telltale emotion. Slowly, she reached for her caffeinated drink and took a very tentative sip, then let out an almost comical sounding "Oh dear!"

Sitting East, the following is the layout of the hand from Daisy's perspective.

♠ K Q J 10 5	♠ A 9 6
♥ K 8 7	♥ A 5 4
♦ Q	♦ A 7 3 2
♣ K Q J 10	♣ A 8 4

So Daisy, there you are, declaring the ambitious contract of 7♠, with the ♥Q as the

opening lead. You've already had more than your daily allotment of caffeine. How are you going to save face with your mentor sitting across the table - the one wearing a troubled grin on his face while slowly grinding his molars into oblivion? Oh yes, she silently recounts the advice of her presently agitated bridge guru. "Count, count, count. And if you do not arrive at a satisfactory number, then count until you do so." In this case, as in all grand slams, that magic number is 13. Nothing less will suffice.

Starting with spades, Daisy counts five sure winners. Another two certain winners are the ♥A and ♥K, bringing her total to seven. The ♦A along with four top clubs brings the total number of winners to 12, still one shy of her goal. Painfully frustrated, her thoughts turned to the idea of generating extra tricks by means of ruffing. There came to mind a vague memory of some sage adage regarding how declarer usually gained additional tricks when they ruffed in the short-trump hand as opposed to the long-trump hand.

Or was it the other way around? Ruff in the long hand...? Or maybe it was... the long and short of it... or, so long as you ruff... perhaps everything will work out just fine. Shaking her head in dismay, Daisy appeared ready to concede defeat when she reached for her coffee mug and polished off its contents with one long swallow.

A sudden sparkle came to Daisy's eyes as she sat up straight in her chair and confidently called for dummy's ♥K, then played dummy's ♦Q to her ♦A and ruffed a small diamond in dummy. She cashed dummy's ♠K, then played the ♠Q and overtook it with her ♠A. She proceeded to ruff another diamond before returning to her hand with the carefully preserved ♥A in order to ruff her last diamond with dummy's last trump. She then came to her hand with the ♣A, drew the opponents' last trump with her now master ♠9 and claimed.

My RHO, who happens to be one of the finest players at club, shook his head in dismay. He then disdainfully muttered something about a dummy reversal. I was at first so overwhelmed by Daisy's masterful play that I had failed to appreciate that she had indeed fulfilled her contract by the only means possible, the execution of a dummy reversal. After composing myself, I reiterated

my opponent's comment, although in a complimentary manner. I proceeded to elaborate on the subject, scribbling on a piece of paper an arcane formula involving the disparity of trump length between one's own hand and the dummy, attempting to explain how declarer must ruff at least one more time in hand than whatever that disparity in trump length might be. My explanation soon became so wordy and esoteric that I realized I must have sounded rambling and confused.

I finally looked up from my cryptic notes and saw Daisy wearing a troubled, almost saddened look on her faced. Evidently she had not caught the gist of the admiring comments bestowed upon her from the rest of the table. Timidly, she asked, "You don't think I'm a dummy... do you?"

With as much sincerity as I have ever mustered in my life, I tell her, "No Daisy, you are certainly no dummy!" As I sort my next hand I add, "Hey Daisy, care for some more coffee?"

Tournament Attendees

Please summon a director should you encounter a deck of cards which is very far past its prime. Every once in a while we miss replacing a really icky deck, but we are happy to do it if we know about it at the time.

Please also call about bidding box cards that need to be replaced

Highway Robbery

by *Barnet Shenkin*

www.shenkinbridge.com



THERE IS NOTHING more fun in bridge than making a play that hoodwinks the declarer, and causes him to go down, in a seemingly impregnable contract. We understand the principle of holdup, and how that can disrupt the declarer's plans. The following hand can be designated, holdup with a twist.

The hand occurs in the 1981 European Championship, Great Britain V Poland

♠ QJ763 ♥ 975 ♦ 85 ♣ J94	♠ K842 ♥ KJ42 ♦ 1064 ♣ Q2	<table border="1" style="margin: auto; border-collapse: collapse;"> <tr><td style="padding: 5px;">N</td></tr> <tr><td style="padding: 5px;">W E</td></tr> <tr><td style="padding: 5px;">S</td></tr> </table>	N	W E	S	♠ 109 ♥ Q86 ♦ KQ973 ♣ A108 ♠ A5 ♥ A102 ♦ AJ2 ♣ K7653
N						
W E						
S						

West <i>Rose</i>	North <i>Kudla</i>	East <i>Sheehan</i>	South <i>Milde</i>
---------------------	-----------------------	------------------------	-----------------------

		Pass	1NT
Pass	2♦*	Dbl	3♣
Pass	3♦	Pass	3NT
All Pass			

* Game Forcing Stayman

Rose led the ♦8 and Declarer played low from dummy. When East played the 3 Declarer won the Jack and led a low club to the Queen. Sheehan played low, without any thought. Now Declarer led another club and thinking West held the Ace played low. East won his ♣10 and continued diamonds knocking out the Ace. Expecting West to hold the ♣A Declarer, rather than guess hearts played what he thought was

a safe club ! Curtains, East won cashed his diamond winners and the contract was down 1.

My advice would be, while making the normal play in a hand will win more points in the long run, it is fun occasionally to do something very different. Should it work out for you, you will obtain a lot of enjoyment, satisfaction, and have a story to tell.

As a footnote, Irving Rose and Robert Sheehan were the leading pair in Great Britain during the 70s and some of the 80s. In 1974, they played in the world pairs championship in Las Palmas. I was there, and actually led with my partner, Patrick Jourdain after the first day, in 4 days play. Rose and Sheehan led the field by 3 boards with 1 session to play.

During the last session, they were East West and moving. When they came to a table at the end of the line, they moved to the wrong line. The director was unable to correct the movement and they ended up playing Garozzo Belladonna and a bunch of the top pairs twice! They finished in fourth place.



Play Hard Play Well

by Robert Todd

robert@advinbridge.com



Here is an interesting hand from the B-A-M at the recent NABC in Denver. It is an example of using the bidding to help you plan the play of the hand.

Vulnerable vs. Non-Vul, you pick up

♠ 86
♥ AT53
♦ J4
♣ A9853

You	LHO	Partner	RHO
Pass	1♣	Dbl	1♥*
2♥	Dbl**	3♥	All Pass

* 4+card spades, a transfer in competition.

** Support double.

Dummy hits and you see:

♠ A54
♥ KJ84
♦ KQ72
♣ T6

♠ 86
♥ AT53
♦ J4
♣ A9853

LHO leads the ♠J.

You start by ducking, and RHO overtakes and shifts to the ♣4, which is also ducked.

1: ♠J 4 Q 6 (-1)

2: ♣4 3 K 6 (-2)

Now LHO returns the ♣Q.

3: ♣Q T 2 A (+1)

You draw trump by playing ♥A, taking ♥ finesse to ♥J, and then playing the ♥K.

4: ♥A 2 4 7 (+2)

5: ♥3 6 J 9 (+3)

6: ♥K ♠3 ♥5 ♥Q (+4)

Now you play on ♦.

7: ♦K 5 4 A (-3)

LHO returns the ♣7. What now?

LHO showed exactly 3-card ♥ by following to three rounds, 3-card ♠ with support X, at least 3-card ♠, and also opened the bidding with 1♣.

It seems clear that LHO is 3-3-3-4 and RHO 5-2-4-2. RHO shifted to the ♣4 and then played the ♣2 so that confirms our suspicion. So you duck the ♣ around to your 9, expecting RHO to show out of clubs and to be able to claim the rest of the tricks.

Today you are in for a surprise! RHO plays the ♣J.

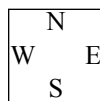
8: ♣7 ♦2 ♣J! ♠5 (-4)

This is particularly surprising given the opening bid from LHO and RHO's ♣ plays. You should take it as a compliment that the opponents picked you to defraud. Only a thinking player could go wrong on this hand!

The complete deal was the following:

♠ A54
♥ KJ84
♦ KQ72
♣ 106

♠ J109
♥ Q62
♦ A1093
♣ KQ7



♠ 86
♥ A1053
♦ J4
♣ A9853

♠ KQ732
♥ 97
♦ 865
♣ J42

It turns out that LHO was being tricky, opening 1♣ on the flat hand with 4-card ♦, and RHO helped keep up the illusion with clever carding. Keep an eye out for these opponents!

Losing Trick Count and The Rule of 18

by Linda J. Green

irwinlinda@bellsouth.net



The Losing Trick Count (LTC) is a way of evaluating the strength of your hand when you have a major suit fit (at least 8 trumps between you). The LTC is a way of estimating how many tricks you will win (or at what level you should play—hence the Rule of 18), rather than high card points. When you have a fit, LTC is more accurate than counting points. If your hand is balanced, however, or you don't have a fit, continue to count points. LTC is not 100% foolproof, but when you have a trump fit it tends to be more accurate than simply counting points!

LOSING TRICK COUNT Applies only with a major suit and a trump fit (at least 8 trumps). We will discuss other concepts of when to use the LTC in depth later.

An Ace, King, Queen is looked for in each suit. It is used in slight conjunction with point count with an agreed trump suit—WHEN YOU FIT, either as a responder or as an opener. This method claims to measure your trick potential far better than point count! Forget about points—Shape glorious shape!

The Facts:

A well-accepted guideline for opening the bidding is to have at least 12 HCPs and no more than seven losers (rare occasions eight losers).

When we respond to opener we are taken to have a minimum of 6 HCP. When we respond to opener we are known to have 9 losers.

- Count your losers - either as opener or responder
- Add your partner's losers - either as opener or responder
- Subtract from 18 - which tells you at what level you should bid.

Why do we use the Rule of 18 and not from 24? Although there are 12 losers in each hand totaling 24, it is easier to know at what level you should play the contract instead of how many

tricks you can make: 6 more than what you bid!

OPENER: Minimum opener = 7 losers or fewer.

A) ♠AK652 = 1 loser Q missing
♥A9 = 1 loser K missing
♦Q4 = 2 losers AK missing
♣8652 = 3 losers AKQ missing

B) ♠A8543 = 2 losers
♥AQ953 = 1 loser
♦854 = 3 losers
♣void

C) ♠KJ543 = 2 losers
♥AQ87 = 1 loser
♦K32 = 2 losers
♣8 = 1 loser

If you have no Aces, add half a loser—no Kings as well, add another half a loser.

Many players forget that an unsupported Queen is 3 losers!

An unsupported Queen = 3 losers. QJx = 2 losers. Q10x = 2½ losers.

For each trump over 4 small ones when the suit is headed by at least two of the top honors - take off 1 loser.

As opener, make a Help Suit Game Try (to be discussed later) with a 6-loser—if partner now fits with you: Upgrade

Remember: The exception: One of the worst shapes in bridge is a 5-4-2-2 and therefore we should add an extra loser!

Responder = Minimum responder = 9 losers or fewer. Always add losers and subtract from 18. Opener is known to have a 7 loser .e.g. Opener's 7 losers + Responder's 7 losers = 14. Subtract from 18 = 4 therefore bid 4 of the major.

With 8 losers and opener's 7 losers = 15 subtracted from 18 = 3 (level) - bid 3 of the major, if that's your limit raise.

Always make an invitational bid with an

8 loser and opener will reassess his hand. As opener - should we have a 6 loser (6+8 = 14) subtract from the magic number of 18 = 4 bid a game.

Let us look at the following examples: Opener opens 1♠:

As responder below, decide at what level you should raise the trump suit

D) ♠J876 = 3 losers
 ♥KQ75 = 1 loser
 ♦A54 = 2 losers
 ♣52 = 2 losers

E) ♠K754 = 2 losers
 ♥K92 = 2 losers
 ♦A753 = 2 losers
 ♣98 = 2 losers

8 losers + opener's 7 losers in both D and E = 15. Subtract from 18=3- bid 3♠

F) ♠874 = 3 losers
 ♥K953 = 2 losers
 ♦A852 = 2 losers
 ♣Q3 = 2 losers

9 losers + opener's 7 losers = 16 Subtract from 18 = 2: bid 2♠

As a responder, it is important to differentiate between "strong" (point-wise) and distributionally shaped hands with 7 losers.

Opener opens 1♠:

Hand A	Hand B
♠J10432	♠A876
♥void	♥K5
♦A109832	♦AQ76
♣32	♣876

Both these hands have 7 losers, but we cannot bid them in the same way.

Hand A = A direct bid of 4♠ shows a distributional hand with support. It is best to raise immediately to the level using the LTC. (The Weak Freak)

Hand B = Bid 2♦, planning a "delayed game raise," knowing partner will make another bid giving you a chance to hear opener's rebid. You are too good to jump straight to game. You can then bid the game (Some of us play Jacoby 2 NT with an opening hand and 4 trumps).

Assessing partner's losers and winners.

G.	Opener	Responder
1♠ - 4♠.	♠AQ543	♠K9862 (2 losers)
	♥AQ2	♥4 (1 loser)
	♦984	♦73 (2 losers)
	♣96	♣A7542 (2 losers)

Partner is known to have 7 losers, you have 7 losers = 14 from 18 = 4: bid 4♠

Maximum losers are 3 in each suit.

H. 1♠ - 1 NT = 6-9 point (9 losers, usually no more than 2 tricks)

4♠ With the following:

♠AKQJ43	♠62
♥A8	♥KQ3
♦A84	♦9765
♣96	♣J543

5 losers + 9 losers = 14 from 18 = 4 level.

This system is a guideline to help you decide on whether to raise, invite, bid a game or even a slam!. It is not 100% foolproof. But it works about 80% of the time.

Opener's Table

Opener with support for responder's suit
 e.g. 1♦ - 1♥ - ?

7 losers	Minimum: no singleton 12-15 HCP Rebid 2♥ (raise)
6 losers	Intermediate: 16-18 HCP Rebid 3♥ (invite)
5 losers	Strong: 18-20 HCP Rebid 4♥ (bid game)

Responder's Table

With support for a 1♠ opening

9 losers	Minimum: 6-9 HCP Bid 2♠ (raise)
8 losers	Intermediate: 10-12 HCP Bid 3♠ (invite)
7 losers	Distributionally shaped Bid 4♠ (bid game)
7 losers	Strong Bid a new suit 1st and then 4♠

Slow Play—

The Bane of Bridge

by Lynn Berg

lberg@cfl.rr.com



WE USED TO SAY that rude and bullying players were the main problem for duplicate, but the enforcement of Zero Tolerance has made a huge difference. More players than ever before are aware of their right to play in a tranquil atmosphere, and I'm happy to say that Director calls for rude behavior are less and less necessary.

What hasn't gotten a lot better is the abuse of time allowances by too many players. In Open Pair Games, we allow seven minutes a board to play your hands and move on to the next table; we allow a little longer in Limited Games—0-299 or even Gold Rush usually gets a more liberal allowance. In most cases, there will be a clock visible to the players, and you should pay attention to the time remaining. When the round is called and the Director says "Do not start any new boards," you could be liable to a procedural penalty if you ignore the announcement and start a new board anyway. You are not just being slow at the table where you are playing; at least two other tables are affected.

The same is true if you are playing in a Swiss team. Often matches can't be made till all the results are in. Your slow play can hold up the whole room. Even if you are playing in a KO or Compact KO, slow play within a Round Robin can be a problem.

If your opponents are late arriving at the table or seem to take an unusually long time bidding or playing a hand, call the Director. ACBL has mandated that Directors not just hand out No Play when a board

can't be played; we are to assess blame and award Average Minus to the players who have caused the delay. You might be lucky enough to get a warning first, but a warning is not mandatory. When we get to a slow table, how are we to know what has caused the delay? If we don't know, we'll warn both sides and then pull boards with Average Minus to the ones who have been warned and Average Plus to their opponents—as well as possibly giving a Procedural Penalty.

Thanks to the Bridgemate software, it's easy to see which tables are lagging and who has a repeated problem. Not long ago, I had to warn a pair that they had consistently been slower than the group—to which one of them replied, "It's never our fault!" Really? You've played four rounds and your opponents have been slow every time, even though none of them has been slow after they leave your table? It's rare (and refreshing!) when someone says, "Sorry—we'll try to keep up."

Sometimes there's an especially challenging set of boards, and we watch it go around the room causing delays. We notice that and take it into account. We also add time to the clock if it looks like the great majority of the players aren't ready to move. It can be a problem, too, if you move early: how can a Director on the floor know that you're not still on the previous round? If you are done early, with more than three minutes on the clock, just wait to move—and don't bug anyone else to get up or

Please see page 29

Lynn Berg has been an ACBL member for over 50 years, a club director for 40 and a tournament director for over 10. She's also done quite a bit of directing on cruise ships and is a teacher trainer for ACBL and for EasyBridge. Lynn says: "I am of the firm opinion that we can adhere to the rules, be completely ethical and still have a great time (and even win!). Civility and good humor go a long way at the table."

Extending Asking Bids After Opener's Raise

by Dr. James Marsh Sternberg

mmayoo1@aol.com



After a minor-suit opening and a single raise of a major suit response, strain and game choice are important decisions. A recent article in *Bridge World* (July 2015, p 30) discussed relays focusing on specific high honors.

Asking bids by responder about number of trumps and strength are important & the 3344 responses are common. But a key issue is also whether opener has shortness. If responder has game or slam interest and finds opener with a minimum and/or no shortness, he may give up on future game or slam exploration, revealing nothing about his hand.

All responses are generic; the minor or major are irrelevant, and after asking bids all responses are step responses (1st, 2nd, etc) making memory easy and unnecessary.

For brevity, the descriptions used are the common ones: mi for opener's minor, M for responder's major, omi and OM for the other minor and major; shortness in one of the other two unbid suits is shown by lower (L) & higher (H), the only 2 possibilities; and min & Max are strength in context of the single raise (12-14 points).

NOTE: All maximums are game-forcing.

After 1mi - 1M

2M - 2NT is forcing, any shape, and asks more description: number of trumps, strength of the raise, and any shortness
3♣ - 3 trumps, min, +/- shortness

P-To play if mi was clubs

3♦ - To play if mi was diamonds, otherwise asks for shortness

If asking: 3♥ (1st) - none, 3♠ (2nd)

- L (lower), 3N (3rd) - H (higher)

3♦ - 3 trumps, Max, promises shortness somewhere;

3♥ asks? 3♠ - L, 3N - H

3♥ - 4 trumps, min, no shortness

Pass - To play if hearts

3♠ - To play if spades

3♠ - 4 trumps, Max, +/- shortness.

3N-asks? 4♣ -none, 4♦ -L,

4♥ -Higher

3NT - 3 trumps, Max, no shortness

4 mi - 4 trumps min, short in OM

4 omi - 4 trumps, min, shortness in omi

4♥ - Max, exactly some 4522

These methods have the advantage of being able to play in 3 of a minor after having raised partner's major, when there is a 7-card major fit but an 8 or 9 card minor fit and no game. Declarer's hand is never revealed to the opponents; the dummy is doing the describing. Responder, with some game or slam interest, can find out strength and shape, shortness so often being the key to slam possibilities.

Lynn Berg

pass boards, either. Often we'll call the last round early, as soon as a fourth of the field is ready to move. It's always a courtesy to pass a board or two if you're not ready to move when the move has been called.

What can you do to mitigate slow play?

1. Find the clock and pay attention to it.
2. Don't discuss any hands till you've completed the round.
3. Lead before you write in your private score or put information on the scoring machine.
4. Come back from break on time.
5. Keep track of your stuff—pencil, convention card, drink—so they aren't slowing you or anyone else down by being misplaced.
6. If you are the victims of slow play, call the Director.

Cohen

bid notrump. With the hand I just showed you, you would raise to 3NT. With the original

♠AQ76 ♥52 ♦AKQ102 ♣K2,

you would bid 3♠ next. That would show a GF spade raise with slam interest. How would partner know? With less, you wouldn't have cuebid first. Or, you could have jumped to 4♠ without real slam interest. This cuebid and then raise shows a hand like you have. Subsequent bids on the 4-level would be control-bids. You could now find out if partner has a heart control.

Note: In this particular situation, the cuebid overlaps "4th Suit GF."

D) West	North	East	South
	1♦	1♠	Dbl
Pass	2♣	Pass	??

Suppose that you (South) hold the following hand:

♠86 ♥AQJ2 ♦KQ32 ♣Q42.

Your partner opens 1♦. After a 1♠ overcall, you made a normal negative double. Partner's

rebid is 2♣. Now what?

You guessed it. You cuebid their suit. As usual, it says nothing about their suit (spades). You might have or might not have a high card in their suit. You would make the same 2♠ bid with:

♠A6 ♥AQJ2 ♦KQ32 ♣Q42.

It neither shows nor denies support for diamonds or clubs. It is just "forcing." If partner has their suit stopped, he will likely bid 2NT next. If he is 5-5 in the minors, you will probably hear 3♣. If he has 3-card heart "support," he can bid 2♥. Your next move, will depend on opener's third call.

Is this second-round two-level cuebid forcing to game? Probably it should be. When the responder knows the opener is minimum, he could guess to cuebid and then bailout if he doesn't like what he hears from opener. But, for simplicity's sake, I recommend playing the cuebid discussed here as forcing to game. It is not alertable (generally, no cuebids, regardless of meaning, are alertable).

Just to review, responder's second-round two-level cuebid says nothing about the suit cuebid, and neither shows nor denies support for opener. It is quite similar to a Western cuebid (which is made on the 3 level).

Rank Changes

January:

Junior Master

Dale Abrahams, Jupiter
 Anita Altman, Tampa
 James Andrews, Ocala
 Marshall Barrett, Vero Beach
 Jerome Bergheim, Fort Lauderdale
 Gloria Blackburn, Wesley Chapel
 Nancy Bleser, Fort Myers
 Robert Briscoe, Village of Golf
 David Butler, Stuart
 Hunter Cochrane, Delray Beach
 Steve Derin, Miami Beach
 Nancy Diamond, Pompano Beach

Henry Donaldson, Tallahassee
 Diane Drake, The Villages
 Judy Dwyer, Summerfield
 Marilyn Farber, Lutz
 Rick Fisher, West Palm Beach
 Andre Gillet, Boca Raton
 Helen Gottlieb, Naples
 Lisa Harris, Safety Harbor
 Edward Hartmann, Jacksonville
 Paula Hendrickson, Lakewood Ranch
 Wayne Horton, Venice
 Derek James, Vero Beach
 Julie Johnson, Oviedo
 Carolyn Kelley, Estero
 George Koch, St Petersburg
 LaVerne Kuttner, Sarasota
 Susan Lantz, Palm Bch Gdns

Anny Lerman, Palm Beach
 Arlene Levin, St Petersburg
 Beverly Loftus, Miami
 Robert Long, Sarasota
 Virginia Manderscheid, Lakeland
 Penny Marks, Jacksonville
 Karen Meyer, Naples
 George Morey, Apopka
 David Newell, Safety Harbor
 Barbara Nowikowski, Stuart
 Dina Oertli, Pinellas Park
 George Paiva, The Villages
 Janet Paiva, The Villages
 Mitchell Peterson, Bradenton
 Beth Portanova, Sun City Center
 Robert Price, Naples
 Martha Reed, Miami

Kenneth Ronson, Boca Raton
 Stephanie Saunders, Tampa
 Elizabeth Stahl, Tequesta
 Daniel Staniketzkzy, Boca Raton
 Pat Stokes, Tallahassee
 Jeffrey Stoltz, Sarasota
 Gail Sunray, Bradenton
 April Thanos, Gulfport
 Beryl Tiviluk, Bonita Springs
 Geraldine Tyler, Jacksonville
 Vivienne Walsh, Crystal River
 Barbara Willard, Palm City
 Jack Yesner, Tallahassee
 Sharyn Yesner, Tallahassee
 Sandra Zupan, Boynton Beach

Rank Changes

Club Master

Jean Altman, Naples
Mary Anderson, Naples
Howard Barich, Lake Worth
Susan Binkley, Orlando
Connie Brown, Flagler Beach
Judith Brown, Sun City Center
Peggy Campbell, Sarasota
Ronald Carpenter, Cape Coral
Pat Christiansen, Sarasota
Elizabeth Coleman, Key Largo
Ruby Conover, Palm Coast
Norma Davidson, Boca Raton
Gilbert Davret, Boynton Beach
Guido Delgado, Coconut Creek
Ellen Erenstein, Boynton Beach
Leslie Ezerski, Bonita Springs
Sheila Fach, Tallahassee
Carol Fangman, The Villages
Jim Fangman, The Villages
Birdie Fox, Atlantic Beach
Barbara Gilbert, Boca Raton
Dorothy Girardi, Sun City Center
Allen Gorrellick, Boynton Beach
Phyllis Greenfield, Ponte Vedra
David Griffith, Naples
Milton Haeger, Naples
Bobbe Haiken, Boynton Beach
Anthony Hamer, Sarasota
John Hilton, Vero Beach
Patricia Hilton, Palm Beach
Enid Hoffman, Boca Raton
Sosamma Idiculla, Sarasota
Matilde Iglesia, Coral Gables
Morton Kurzrok, Boca Raton
Roland Lalonde, Fort Pierce
Mildred Larsen, Key Largo
Jane Lind, Naples
Donald Marsh, Boynton Beach
John McLain, Valrico
Nancy McNamara, Poinciana

Aileen Moskowitz, Boynton Beach
Frances Murphy, Key Largo
Kathy Nickel, Naples
Jane Nugent, West Palm Beach
Paul Ohara, Fort Lauderdale
Jo Palmer, Palm City
Alice Parsons, Ormond Beach
Julie Pestella, Madison
Ann Powell, Bonita Springs
Murugan Rajaratnam, Winter Haven
Diane Reed, Fort Myers
Gwen Reynolds, Lakeland
Fondie Rittman, Saint Augustine
Richard Rittman, Saint Augustine
Lee Rodman, Aventura
Gordon Rohr, Naples
Nancy Rosenfeld, The Villages
John Saylor, Vero Beach
Gary Segal, The Villages
Laura Selling, Kissimmee
Robert Simons, Key Biscayne
Lynn Simpson, Ormond Beach
Gail Singer, Royal Plm Beach
Mary Ruth Smith, Winter Haven
Julius Sparacino, Vero Beach
Yannick Tessier, Plantation
Mary Jo Ubriaco, Naples
Mayer Wainstein, Longboat Key
Natalie Weinman, Longwood
Jim Whittington, Pensacola

Sectional Master

Martin Abraham, Hollywood
Sylvia Balne, Coconut Creek
Dee Banker, West Palm Beach
William Benedikt, Naples
Harry Brady, The Villages
Peggy Bush, Saint Augustine
Mary Chase, Pace
Jean Coggin, Pensacola
Andrea Dichi, Hallandale Bch
Donna Egan, Bonita Springs
Harvey Esrov, Naples

Mary Ann Fazio, Lighthouse Pt
Lynne Feinstein, Palm Bch Gdns
Kenneth Finn, Naples
Pamela Finney, Crawfordville
Ronald Finnin, Beverly Hills
Linda Fischler, Boca Raton
Thomas Fox, Atlantic Beach
Deborah Franz, Naples
James Gallman, Lakeland
Harris Gally, Boynton Beach
Patricia Garrett, Sarasota
Ruth Giordano, Tampa
Jonathan Gordon, Tampa
Louis Greenberg, Delray Beach
Judith Greengrass, Lutz
Peggy Harlow, Ferdinandina Bch
Teresa Hedinger, Naples
Junko Hemus, Windermere
Josephine Hiern, Naples
Mariana Hill, Sarasota
Nancy Hill, Jupiter
Kathleen Johnston, Vero Beach
Trudy Kalen, Lighthouse Pt
David Karen, Naples
Arlene Karyo, Boca Raton
David Kelly, Delray Beach
Mary Khoury, Apopka
Roger Kipp, Osprey
Carol Koehler, Naples
Mary Konrad, Dunedin
Sheila Kostanecki, Orchid
Margot Kravitz, Boca Raton
Arlene Lanter, Delray Beach
Beatriz Marriott, Vero Beach
Serena McDermott, Orchid
Judith McE, Tequesta
Kay Meinhardt, Key Largo
Delores Miller, Fort Myers
Peter Monachese, Ormond Beach
Janet Murphy, Naples
Ron Newcomer, Land O Lakes
Leslie Osterweil, Tampa
Nancy Patton, Jacksonville
Karen Pfister, Vero Beach
James Pollard, Avon Park
Deshea Rimes, Tallahassee
David Rinder, Palm Bch Gdns
Nancy Roberts, Ponte Vedra
Richard Rogers, Ocala
Carole Rosen, Palm Bch Gdns

Betty Rosenfeld, Boynton Beach
Jane Rowe, The Villages
Sherri Samuels, Boca Raton
Chiharu Schmeisser, Ft Walton Beach
Linda Segalini, Palm Bch Gdns
Carol Sherman, Palm Bch Gdns
Donald Singer, Tequesta
Shirley Slater, Naples
Francis Soffey, Naples
Barbara Steed, Fort Myers
Doris Strachan, Palm Bch Gdns
Robert Strokes, Naples
Sonja Thomas, Orlando
Joyce Thompson, The Villages
Jean Tracey, Tequesta
Lois Weinstein, Boca Raton
Lenore Weiss, Longboat Key
Steve Wells, Cape Coral
Gordie White, Sarasota
Joanne Wills, Key Largo
Beverly Willson, Bonita Springs
Carol Winston, Palm Bch Gdns
Henry Wright, Boca Grande
Mary Zwirn, Key Largo

Regional Master

Guy Alfano, Hudson
Cynthia Apostolakis, Naples
Yara Barretta, Kissimmee
Judy Beckwith, Ponte Vedra Bch
Carol Briant, Ocala
Jim Carpenter, Saint Augustine
Fred Costin, Sarasota
Gail Danhoff, Palm Coast
Tippy Davis, Orlando
Jo-Beth Dickson, Clearwater
Anna Ehlerst, Coral Gables
Sherman Etra, Palm Bch Gdns
Jane Foster, Palm Beach
Brenda Friedman, Boca Raton
Linda Gilbert, Boynton Beach
Esther Gillie, Bradenton
Sophie Glover, Palm Bch Gdns
Celeste Graneto, Ponte Vedra Bch
Basil Hakki, Marco Island

District Nine

MARCH		Apr 29 - May 1	JULY
Mar 1-31 GNT Club Qualifying	Mar 19-20 Vero Beach 499er Sectional	GNT Finals & Sectional	Jul 1-31 NAP Club Qualifying
Mar 3-5 Gainesville Sectional	Mar 18-20 Venice Sectional	MAY	Jul 4-10 JACKSONVILLE REGIONAL
Mar 4-6 Rockledge Sectional	Mar 23-24 Deland 299ers	Apr 29 - May 1 GNT Finals & Sectional	Jul 15-17 Bonita Bridge Sectional
Mar 4-6 Khatib Sectional	Mar 22-26 Pompano 499er Sectional	May 5-7 Palm Coast 299er Sectional	Jul 15-17 Pensacola Sectional
Mar 4-6 Bradenton Sr/NLM Sectional	Mar 22-26 St. Petersburg 499er Sectional	May 13-15 Sarasota Sectional	Jul 21-31 WASHINGTON DC NABC
Mar 7 ACBL-Wide Senior Game	Mar 28-Apr 3 SOUTHEASTERNS REGIONAL	May 19-22 Naples Sectional	Jul 22-24 Orlando Sectional
Mar 7-13 U102, 219, 240, 243 STaC	APRIL	May 19-22 St. Petersburg 499er Sectional	Jul 29-31 Villages 499er Sectional
Mar 10-12 Palm Coast Sectional	Mar 28-Apr 3 SOUTHEASTERNS REGIONAL	May 20-22 Orlando Sectional	AUGUST
Mar 10-20 RENO NABC	Apr 1-30 Charity Club Championship Games	May 27-29 Jacksonville Sectional	Aug 1-31 NAP Club Qualifying
Mar 11-13 Ft. Myers Sectional	Apr 6-8 Bridge Deck Sr/NLM Sectional	Jun 3-5 The Villages Sectional	Aug 5-7 Ft Myers Sectional
Mar 11-13 Clearwater 499er Sectional	Apr 8-10 Ocala Sectional	June 6-12 TAMPA REGIONAL	Aug 6-7 Deland 499er Sectional
Mar 18-20 Pensacola Sectional	Apr 22-24 Spring Hill Sectional	Jun 13-19 Unit 128 STaC	Aug 8-14 District 9 STaC
Mar 18-20 St. Augustine Sectional	Apr 22-24 McGregor Point 499er Sectional	Jun 23-25 Naples Sectional	Aug 22-28 PALM BEACH GDNS REGIONAL

Tournament Calendar

Aug 25-27 Palm Coast Sectional	Oct 7-9 Ft Walton Beach Sectional	Nov 7-13 DAYTONA BEACH REGIONAL	Jan 23-29 SAN DESTIN REGIONAL
Aug 26-28 Tallahassee Sectional	Oct 7-9 McGregor Point 499er Sectional	Nov 14-20 U219, 240, 243 STaC	Jan 27-29 North Palm Beach Sectional
SEPTEMBER	Oct 14-16 North Orlando Sectional	Nov 18-19 DeLand 299er Sectional	Jan 27-29 Margret Bridge Club Sectional
Sep 2-5 St. Petersburg Sectional	Oct 14-16 Clearwater Sectional	Nov 18-20 Sarasota Sectional	FEBRUARY
Sep 3-5 Melbourne Sectional	Oct 16-18 Miami Sectional	Nov 24-Dec 4 ORLANDO NABC	Feb 3-5 Fort Lauderdale Sectional
Sep 8 ACBL-Wide Instant Matchpoint Game	Oct 20-23 St. Petersburg 499er Sectional	DECEMBER	Feb 3-5 Jacksonville Sectional
Sep 8E-11 Venice Sectional	Oct 21-23 Jacksonville Sectional	Nov 24-Dec 4 ORLANDO NABC	Feb 3-5 Winter Haven SR/ NLM Sectional
Sep 15-17 WIN Inc Sectional	Oct 17-23 U243, 102, 219 240 STaC	Dec 5-11 U128 STaC	Feb 3-5 McGregor Point 499er Sectional
Sep 15-18 St. Petersburg 499er Sectional	Oct 28-30 NAP Finals & Sectional	Dec 9-11 Vero Beach Sectional	Feb 6-12 SARASOTA- MANATEE REGIONAL
Sep 15-18 Daytona Sectional	NOVEMBER	Dec 12-18 FT LAUDERDALE REGIONAL	Feb 13-19 Unit 128 STaC
Sep 19-25 NABC Fund Raiser Week	Nov 4-6 Ft. Myers Sectional	JANUARY	Feb 17-19 Vero Beach Sectional
Sep 26-Oct 2 NAPLES REGIONAL	Nov 4-6 Lake Park Sectional	Jan 2-8 ORLANDO REGIONAL	Feb 24-26 Sun City Center Sectional
OCTOBER	Nov 4-6 Pensacola Sectional	Jan 12-15 Daytona Sectional	Feb 24-26 Orlando Sectional
Sep 26-Oct 2 NAPLES REGIONAL	Nov 4-6 St. Augustine Sectional	Jan 13-15 Lake Park Sectional	Feb 27-Mar 5 THE VILLAGES REGIONAL
Sep 26-Oct 2 NAPLES REGIONAL		Jan 13-15 St. Petersburg Bridge Club Sectional	
Oct 6-8 Citrus Bridge Sectional		Jan 19E-22 Sarasota Sectional	
		Jan 20-22 U240, 243, 219 STaC	

Rank Changes

Liz Harris, Maitland
Barbara Inskip, Naples
Gloria Janowitz,
Jacksonville
Mary Kasper, Fort Myers
Rosalind Katcef, Palm Bch
Gdns
Dorothy Kemp, Key Largo
David Klancke, Naples
Linda Lemmon, Vero Beach
Carol Malo, Palm Bch Gdns
Thomas Mason, Ponte
Vedra
Larry McDonald, Bonita
Springs
Bette McNamara, Naples
Ralph Miller, Palm Bch
Gdns
Majorie Milone, Naples
Robert Moran, Delray
Kathleen Muniz, Naples
Victoria Nicoll, Orlando
Rita Pennino, Tampa
Kay Peterson, Palmetto
Janice Pilon, Vero Beach
Jan Porterfield, Bonita
Springs
Ralph Pryor, Land O Lakes
James Riley, Clearwater
June Rosenthal, Boca Raton
Elaine Schaller, Palm Bch
Gdns
Nancy Schauer, St
Petersburg
Harry Scott, Naples
Vicki Wagner, Tampa
Franklyn Weisblat, Lake
Worth
Stephen Wildstein, Palm
Bch Gdns
Thomas Williams, Delray
Beach
Dottie Young, Sun City
Center
Dottie Zammias, Miami
NABC Master
Eileen Abramson, Palm
Beach
Helene Barasch, Boca
Raton
Deborah Bricker, Palm
Beach
Jo Ellen Drisko, Leesburg
Laurel Everett, Tampa
Nancy Hayden, Boca
Grande
Joan Kaplan, Fort
Lauderdale
Jeffrey Lefcourt, Miami
Joan Ninness, Jupiter

Elizabeth Novak, Boca
Raton
Carolyn Oates, Spring Hill
Marcia Pandjiris, Naples
Michael Peleck, The
Villages
Ellen Postrel, Boca Raton
Donald Rancourt, The
Villages
David Rieback, Coral
Springs
Gayle Rosenberg, Weston
Harriet Samuels, Boynton
Beach
Florence Shayne, W Delray
Beach
Robert Shoenfeld, Palm
Bch Gdns
Michael Siegendorf, Davie
Bernard Silverstein, Miami
Harold Soskin, Land O
Lakes
Gilbert Stockton, Oakland
Park
Jeannie Vine, Boca Raton
Joanne Young, Gainesville

Adv NABC Master

Barry Fox, Lake Worth
Robert Gordon, Miami
Sylvia Jackson, Niceville
Bruce Maier, Tampa
Life Master
Leslie Avenier, Jacksonville
Catherine Binder,
Clearwater
Alexa Canady-Davis,
Pensacola
Robert D'Avanzo, Sarasota
Barbara Edelson, The
Villages
Malvina Feinswog,
Coconut Grove
Karen Gibson, Naples
Elayne Hallarman, Boca
Raton
Robert Jacobs, Delray
Beach
Nancy Kaplan, Naples
Edward Listengart, Boca
Raton
Rebecca Miller, Highland
Beach
Shirley Passeri, Sun City
Center
Monica Phillips, Key Largo
Dorothy Podhurst, Coral
Gables
Susan Sachs, Islamorada
Gloria Supran, Boca Raton
Sue Weihl, Key Largo

Donald Weiss, Boynton
Beach
Barbara Woltz, Miami
**Bronze Life
Master**
Timothy Baelz, Kissimmee
Vladi Basch, Venice
James Bronson, Lakeland
Alexa Canady-Davis,
Pensacola
Ronald Covato, Elkton
R Elaine Dreidame, The
Villages
Marilyn Levin, Boynton
Beach
Edward Listengart, Boca
Raton
Nancy Littenberg, Port St
Lucie
Jack Mecholsky, Gainesville
Rebecca Miller, Highland
Beach
Shirley Passeri, Sun City
Center
Dorothy Podhurst, Coral
Gables
Susan Sachs, Islamorada
Barbara Unger, Englewood
Sue Weihl, Key Largo
Barbara Woltz, Miami

Silver Life Master

Joan Barlas, Clearwater
Carol Branand, Fort Pierce
Donald Cavanaugh,
Gainesville
Margaret Connors, Naples
Anna Cormier, Davenport
Steven Hudson, Highland
Beach
Willis Jones, Naples
Robert Labarge, The
Villages
Marsha Miller, Jacksonville
Phyllis Rosenstock, Boca
Raton
Mary Turner, Stuart
Marc Weisgold, University
Park
Donald Weiss, Boynton
Beach
Gordon Youngwood,
Bradenton
**Ruby Life
Master**
Ardean Black, Lakeland
Bob Buster, Fort Myers

David Doretsky, Fort
Lauderdale
Jean Edmundson, Ind
Harbour Bch
Barbara Fantaski, Panama
City
Anne Johnson, Saint
Augustine
Nancy Katz, Carolina PR
Betty Linett-Huether, Plant
City
Edmund Lundy, Cooper
City
Thomas Margraff, St
Petersburg
David Merson, Boynton
Beach
Linda Strosberg, Boynton
Beach
Bobbie Sward, Vero Beach
James Thomas, Hernando
Jim Tully, Cocoa
Janet Typaniski, West Palm
Beach
John Vega, Naples
Zev Wajzman, Atlantic
Beach
Mary Welch, Hernando

Gold Life Master

Sanford Robbins,
Pompano Beach
**Sapphire Life
Master**

Frederick Hartman, Palm
City
Irina Kislitsyna, Aventura
William Perry, Riverview

Diamond Life Master

Jo Anne Casen, Wellington
Betty Sandifer, Daytona
Beach
Robert Schives, Vero Beach
Agnes Smith, Orange Park

Emerald Life Master

Bette Cohn, Sarasota
Betty Wilton, Tampa

Platinum Life Master

Martin Robins, Delray
Beach

Grand Life Master

John Diamond, Boca Raton

February:

Junior Master

Gerald Adams, West Palm Beach
Deborah Ayache, Boca Raton
Ginger Basile, Palm Bch Gdns
Louise Bourgeois, Port Charlotte
Jo Brookhart, Boca Grande
Nancy Butler-Rogers, North Venice
K Suzanne Caltwin, Vero Beach
Kathy Cappy, New Smyrna
Kenneth Cappy, New Smyrna
Bernard Carleton, The Villages
Bette Dale, Novi MI
Judith Donnelly, Leesburg
Michelle Donnelly, Gainesville
Ron Duell, Alford
Armand Epstein, Palm Bch Gdns
Kathleen Feikle, Lady Lake
Kevin Foster, Sanford
Michael Fowler, Bronson
Romanger Fredricks, Daytona Beach
Robert Fromer, Palm Beach
Elizabeth Garner, Santa Rosa Bch
Elizabeth Ghriskey, Boca Grande
Arthur Gilbert, Coral Gables
Susan Glade, Orange Park
Edwin Glickman, Boca Raton
Shirley Glickman, Boca Raton
Jan Godbold, Winter Park
Allan Goldsmith, Sarasota
Georgia Grant, Naples
Carolyn Greenberg, Winter Park
Barbara Grimes, Wellington
Richard Grow, Palm Beach
Patricia Hamlin, Vero Beach
Paul Horton, Hudson
Beth Howard, Vero Beach
Brian Hunt, Key Largo
Joseph Jennings, Sarasota
Linda Jones, Palm City
Gail Jordan, Jupiter

Jayne Keith, Palm Beach
Grace Koch, St Petersburg
Joanne Laforgia, Naples
Marcia Lenski, Bradenton
Ann Leventhal, University Park
Patricia MacDonald, Naples
Jack Mansbach, Sarasota
Maxine Marcus, Boynton Beach
Joan Montello, Bonita Springs
Robert Moore, Vero Beach
Stephanie Morgenstern, Clermont
Liz Morris, Delray Beach
Connie Mullen, Naples
Karen Norris, Wellington
Victor Ouellette, Bradenton
Kathrine Palmer, Palm Beach
Joy Pavone, Debarry
Mary Payne, Apollo Beach
Harle Phelps, The Villages
Esther Powel, Debary
Stacy Pressman, Oldsmar
Walter Reichert, Sarasota
Rosemary Reilly, Ocala
Barbara Reiss, Naples
Thomas Rogers, North Venice
Ellen Rosner, Jacksonville
Pouran Samii, Bonita Springs
Waltraud Schmid, Gainesville
Nancy Siver, St Petersburg
Barbara Sloan, Gulf Stream
John Souza, Vero Beach
Sue Spector, Boca Raton
George Spencer, Longwood
Bonnie Stapleton, N Palm Beach
Sharon Strong, Winter Park
Florence Subin, Delray Beach
Jill Tane, Palm Bch Gdns
Umberto Tessaro, Miami
Joyce Tippins, Lutz
Nancy Unser, Orlando
Christina Vincent, Vero Beach
Mel Weinstein, Lake Worth
Stellye Weinstein, Lake Worth
David Weiss, Sarasota
Justine Wilcox, Vero Beach
Marcella Ray Wilson, Kissimmee

Merle Wilson, Boca Raton
Lois Wrightson, Jupiter
Lee Yule, Naples

Club Master

Karen Angst, Stuart
Ellen Baer, N Palm Beach
Barbara Bailey, Sarasota
Richard Bailey, Sarasota
Kathleen Bobbitt, Sarasota
Lilias Bostwick, Delray Beach
Nancy Boyer, Marco Island
Josephine Braitman, Boynton Beach
Floyd Burton, Bradenton
Lou Citterman, Bonita Springs
Sheri Citterman, Bonita Springs
Gerrie Cook, Naples
Anne Cooney, Vero Beach
Casey Deller, Ormond Beach
Glenn Detenbeck, Lake Wales
Cheryl Dietz, Ormond Beach
John Dietz, Ormond Beach
Kelley Dryden, The Villages
Linda Dufault, Saint Augustine
Charlotte Ehlig, Ponte Vedra Bch
Janet Elliott, Naples
Dorothy Farley, Naples
Jean Fincher, The Villages
Thomas Frazee, Casselberry
Marilyn Friedwald, Vero Beach
Roberta Fusco, Daytona Beach
Robert Gasser, Vero Beach
Roy Giehls Jr, Sun City Center
Joyce Graham, Orlando
Salome Hein, Palm City
Shelley Heinemann, Jupiter
David Herriges, Sun City Center
Louise Hoffman, Marco Island
Joyce Holland, Sarasota
Dawn Holmes, Vero Beach
Jean Howard, Boca Grande
Robert Hoyer, Naples
Joan Hundley, Orlando
Elizabeth Jackson, Deland
Patricia Johnson, Winter Springs
Joyce Knapp, The Villages
Alan Kornbluh, Coral Gables

Becky Kovaleski, Orlando
Donald Levin, Lady Lake
Roger Lewis, Ormond Beach
Winnie Magee, Jupiter
George Mason, Hillsboro Beach
Joseph Murphy, Key Largo
Judy Murray, Hobe Sound
Robert Nau, N Palm Beach
Deborah Nutt, Key Largo
Mel Orfans, Lake Worth
John Osterweil, Tampa
Marcia Paholski, The Villages
Bob Palmer, Estero
Valerie Pelkowski, Sun City Center
Barbara Perkins, Ocala
Judy Pettit, Lakeland
Martha Reed, Miami
Jean Rohs, Vero Beach
James Rottman, Sun City Center
Susan Russell, Palm City
Marilyn Sager, Coral Gables
Cheryl Sari, Sun City Center
Dottie Sauer, Naples
Warren Scheffer, The Villages
Sheryl Scher, Boca Raton
Mary Helen Schultz, The Villages
Mercia Sekerel, West Palm Beach
Jackie Shapiro, Boynton Beach
Michael Shapiro, Longboat Key
Melissa Sovereign, Jacksonville
Sandra Stanton, Debarry
Deanna Sucusy, Hobe Sound
Janet Tingle, Islamorada
Robert Wiersma, Estero
Ahmed Yousry, West Palm Beach

Sectional Master

Leslie Balis, Tampa
Thomas Bentien, Vero Beach
Elizabeth Bridges, Sanford
Mary Beth Carby, Avon Park
Joanne Cichon, Hobe Sound
Ebba Kerstin Dampier, Pensacola Beach
Barbara Doll, Sarasota

Rank Changes

Pat Dullea, The Villages
Pat Durkin, Palm Coast
Beth Dyer, Naples
Frank Fittipaldi, Naples
Diane Gordy, Palm Beach
Geraldine Hadley, Sun City Center
Wedad Halaka, Pompano Beach
Kathryn Harn, Deland
Kenneth Jeffers, Summerfield
Rita Lawlor, Palm City
Heather Margolis, Boynton Beach
Donna Mitchell, Stuart
Beverly Murphy, Casselberry
Lee Ned, The Villages
Sheila Noakes, Naples
Helga Pereira, Gainesville
Margaret Quetel, Saint Thomas VI
Art Quinn, Flagler Beach
John Recco, Naples
Victoria Rhodes, The Villages
Sheryl Richter, Jupiter
Dorothy Rogers, Lake City
Edward Roth, Boynton Beach
Nancy Sauerbrey, Daytona Beach
Jeanne Seidel, New Smyrna
Jane Shallcross, N Palm Beach
Samuel Spear Jr, Delray Beach
Bernard Steinweg, Palm Bch Gdns
Bettye Strother, Fort Myers
Marianne Victor, Palm Bch Gdns
Judy Warren, Sarasota
Rose White, Brooksville

Regional Master

Diane Angella, Hollywood
Alex Birman, The Villages
Joan Braun, Estero
Judith Collins, Palm Bch Gdns
Mary Lee De Koch, Lady Lake
Joanne Gatewood, Plantation
Annette Grimpe, Winter Haven
Junko Hemus, Windermere
Geraldine Insinga, Fort Pierce

Dee Kirkbride, Delray Beach
Stuart Meshboum, Bonita Springs
Elsa Nail, Lakeland
Harriet Packer, Boynton Beach
Jack Sieling, Pinellas Park
Fred Taylor, Altamonte Spg
Linda Trifon, Lake Worth
Patrick Wallace, Boca Grande
Kathy Wheeler, Poinciana
George Winn, Tampa
Martha Wright, Blowing Rock NC
Bruce Yberg, Apopka
Ahmed Yousry, West Palm Beach

NABC Master

Gigi Aron, Lantana
Sue Blumenfeld, Sun City Center
Larry Boulia, Sarasota
Robert Cato, High Springs
Susan Cohen, Lake Worth
Judy Duell, Alford
Patty Duncan, Cape Coral
Brian Fisher, Vero Beach
Flo Fisher, Vero Beach
Betty Fortune, Lakeland
Emily Gardner, Palm Beach
Sandra Geller, West Palm Bch
Laura Hanslip, Royal Plm Bch
Barbara Harkleroad, Ormond Beach
Joyce Hitchman, Winter Haven
Marilyn Hubbard, The Villages
John Kuyper, The Villages
Claudia Maricle, Clearwater
Mary Rowe, The Villages
Vicki Schell, Pensacola
Betty Thompson, Naples
Janet Venosa, Estero

Adv NABC

Master

Betsy Bunting, Naples
Janice Dashler, Belleair
Ray Duncan, Weeki Wachee
Susan Elliott, Crystal River
Brenda Kefauver, Naples
Patricia Rodilosso, Naples
Ruth Ann Verell, Naples

Life Master

Lucille Bearsch, Winter Park
Karen Beinner, Delray Beach
Patricia Brown, Port Orange
Ann Buchholz, Ponte Vedra Bch
Joanne Dorey, Orchid
Jane Dulieu, The Villages
Carolyn Gornowicz, Winter Garden
Jerry Gornowicz, Winter Garden
David Haskell, The Villages
Cabot Jaffee Jr, Maitland
Milferd Jones, Clearwater
Virginia Jones, Clearwater
Kathy McKay, Lady Lake
Mel Meskin, West Palm Beach
Paul Moniz, Debarry
A Carol Payette, The Villages
Susan Pivko, West Palm Beach
Richard Tolpin, Tavares
Susan Woodman, Orlando

Bronze Life

Master

Lucille Bearsch, Winter Park
Thomas Burke, Estero
Gerry Cameron, Cape Coral
Patricia Campbell, Fort Myers
Paul Caten Jr, Venice
Ann Cope, Palm Bch Gdns
John Dragich, Highland Beach
Jane Dulieu, The Villages
Milferd Jones, Clearwater
Mary Ellen Kammert, Altamonte Spg
Faisl Kayali, Belle Isle
Joyce Lee, Palm Harbor
Theresa Morrissey, Palm Beach Gard
Laura Novosad, Labelle
Monica Phillips, Key Largo
Silvia Rich, Coral Gables
Neil Rosenblum, Palm Beach Gdns
Tom Rusk, Sanford
Sharlene Tyler, Poinciana
Robert Witham, Clearwater
Susan Woodman, Orlando
Paul Yorke, Fort Myers

Silver Life Master

Joan Bradford, Coral Gables
Sandy Desilets, Daytona Beach
Alice Fried, Boca Raton
Michael Gibson, Sarasota
Barbara Hamilton, Lady Lake
George Kenworthy, Bradenton
Stephen Newman, Palm Bch Gdns
Barry Nowling, Fort Lauderdale
Evelyn Palmer, Punta Gorda
Caroline Philipbar, Palm City
James Poitras, Narcoossee
Patricia Poitras, Narcoossee
Jill Randell, Delray Beach
Lyn Shapiro, Maitland
Helene Weiss, Coconut Creek

Ruby Life Master

Craig Abbott, Sarasota
Amanda Chohfi, Jupiter
Murray Hall, Pensacola
Stephen Popham, Sebring
Jill Weiss, Palm Beach

Gold Life Master

Whit Campbell, Spring Hill
Edgar Casper, Tallahassee
Paul Freiberg, Naples
Jean Shufelt, Naples
Marcia Stauber, Palm Bch Gdns
Larry Westholm, Pensacola

Sapphire Life Master

Patricia Hirsch, Boynton Beach
Ledon Hitch, Clearwater
Robert Ramos, Fort Lauderdale

Diamond Life Master

Virginia Crump, The Villages



President's Message

President

Carol Hamilton
941-371-0949
jimandcarolh@comcast.net

Vice President

Harriette Buckman
941-355-7011
harriettebuckman126@gmail.com

Secretary

Sandy Lewis
941-923-6335
Sllewis707@aol.com

Treasurer

Sandra Fleischman
941-580-3719
sfleischman@tampabay.rr.com

Board Members

Mike Gibson
571-379-3229
mikegibson808@gmail.com

Merle Greenwald
941-366-1106
normamerle@comcast.net

Tom Lordi
941-351-6869
Tomilordi@yahoo.com

Cynthia Murphy
941-355-3160
Cinderneill@Comcast.net

Jim Russell
941-592-8117
Rusty1950@verizon.net

This message is being written as we are completing our January Sectional. It was a great tournament despite a little hiccup on the first day. Too many tables! Thanks to Michelle Golden for letting us send our overflow across the street to her club. It worked out quite well, and we were very grateful.

The re-elected members of our Board of Directors were announced at our Annual Meeting. Congratulations to Sandra Fleischman, Sandy Lewis, Tom Lordi & Jim Russell, and thanks for your continuing service to Unit 102.

January & February were very busy. Our Pro Am Charity Pairs was very well-attended, and our Regional was a huge success as well, with more Hospitality than ever. Please be aware that a lot of work goes on behind the scenes to make these events take place. If you are willing to contribute your time in helping, please let one of our Board members know.

Our next Happening is our Annual Membership Luncheon at Misty Creek Country Club on April 24. Please look for details on the following pages. It is a very enjoyable afternoon, featuring a wonderful complimentary luncheon for Unit members.

Keep up the good work on welcoming behavior at the table. Greeting your opponents goes a long way in establishing a pleasant, enjoyable atmosphere for everyone!

Carol

Please welcome these new members of Unit 102

Charlotte Berman
Joan Breiner
Mary Brown
Mary Rose Carpenter
Janis Cohen
Amanda DeYoung
Harry Eisenberg
Marsha Eisenberg
Sylvia Hefner
Paula Hendrickson
Jean Jankowski
Christine Kageff
Bonnie Kistler
Clayton Knapp
Marlene Lancaster
David Landrey
Mary Ellen Laughlin
Viola Marie Lawson
Sheryl King Lazzarotti
Jacquelyn Lease
Marcia Lenski
Silvana Leonard
Robert Long
Anne Mohl
Jean Neal
Richard Neal
Bo Ohman
David Patton
Irene Press
Maureen Ranft
Walter Reichert
Judy Riley
Elizabeth Rose
Rhona Shapiro
Pauline Tasler
Gail Sunray
David Weiss
Judy Wolff
Inger Zeilon

72% Club

Marvin Greene and Anne Runyan scored 72.34%, on Nov. 24, 2015, at In Between Club.

Upcoming Events

The Annual Membership Luncheon is on April 24, 2016 at Misty Creek Country Club starting at 11:00 am. Format is six-round Unit Championship Swiss Teams with complimentary luncheon for Unit 102

members after the second round. Please gather your team and reserve by contacting Carol Hamilton with individual names of all team members.

Entry fee of \$60 per team is payable on the day of the event. We are limited to 28 teams, so please start planning and email Carol (jimandcarolh@comcast.net)

The Spring Sectional will be held May 13-15 at the In-Between Club.

Winter Sectional Winners



*Friday Morning Open:
Paul, Jr. & Carol Caten*



*Friday Morning NLM: Patricia Lehmann &
Daniel Long III*



*Saturday Afternoon Open:
Jim Maxwell & Izrail Gorran*



Saturday Afternoon NLM: Christine Cobb & Joyce Stanley



Sunday Open Swiss: George Wood, Larry Auerbach, Jim Russell & John Oxley



Saturday Compact KO: Eric Brauner, Beth Cotner & George Kenworthy (missing is Vincent Mirante)



Sunday NLM Swiss: Judy Kirkendall, Tom Bode, Marge & Tom Davidson

CLUBS IN THE UNIT 102 AREA (see also www.Unit102.com)

Bradenton Bridge Assn.

Oneco Kiwanis Community Center, 1720 53rd Ave. E., Oneco, FL 34203

Craig Abbott, Director - Tel: 941-358-8282 Mobile: 941-724-2029

email: craigabbott@comcast.net

In-Between DBC

Town & Country Plaza, 501 N. Beneva Rd. Sarasota, FL 34232

Michelle Golden, Director - Tel: 941-365-7875 or 941-355-6940

email: michellegolden@inbetweenbridge.com

Club Website: www.inbetweenbridge.com

InterCity DBC

Temple Sinai of Sarasota, 4631 South Lockwood Ridge Road, Sarasota, FL 34231

Tuesday Director: Linda Darter

Cell: 918-210-2988; Home: 941-423-3034; email: medarter@yahoo.com

Monday Director: Marilyn Snodell

Phone: 941-780-1605; email: marilynsnodell@gmail.com

Results posted on www.Unit102.com

Longboat Key BC and Merrill Bridge Club

Bayfront Park Rec. Ctr. of LBK, 4052 Gulf of Mexico Dr., Longboat Key, FL 34228

Larry Auerbach, Director - Tel: 941-567-8115

Club Website: www.District9acbl.org

Scroll down to District 9 Club Game Results



Sarasota's 2016 Spring Sectional

In-Between Bridge Club

May 13, 14 & 15, 2016

TOURNAMENT SCHEDULE

CONTACTS: UNIT 102

Fri., May 13

10:00am

Bracketed & Handicapped KO's—1st of 3 Sessions
Stratified Open & 0-500 NLM Pairs—Single Session
Newcomer Pairs—0 to 50*

WEBSITE: www.unit102.com

HEAD DIRECTOR: Henry Falk

Sat., May 14

10:00am

Bracketed & Handicapped KO's—Final Session
Stratified Open & 0-500 NLM Pairs—Single Session

TOURNAMENT CHAIR:

Tom Lordl, Home Phone: (941) 351-6969

tomlordl@yahoo.com

PARTNERSHIPS:

Partnership desk at:

www.bridgefitness.com/D9pDeskIndex or

Henry Corwin, (941) 228-3932

henrycorwin@gmail.com

3:00pm

Bracketed & Handicapped KO's—2nd Session
Stratified Open & 0-500 NLM Pairs—Single Session

Sun., May 15

10:00am

Youth Bridge Game—Single Session
Stratified Open & 0-500 NLM Pairs—Single Session
Stratified Open Swiss**--Play through
Stratified 0-500 NLM Swiss***--Play through

MINI-LESSONS: 2:15 pm, Friday & Saturday

SNACKS/COFFEE PROVIDED AT ALL EVENTS: LUNCHEON PROVIDED SUNDAY

Stratification:

Open Strata: A = 3000+; B = 1000 - 3000; C = 0 - 1000

0-500 NLM Strata: A = 300 - 500; B = 100 - 300; C = 0 - 100

* Depending on attendance

** Swiss Team Stratification based on average number of points per team. 20 VP scale

*** Not averaged

SITE DIRECTIONS:

In-Between Bridge Club: I-75 to Exit 210 (Fruitville Road), west to Beneva (about 2 miles), right onto Beneva and left into Town & Country Plaza. Club is at rear of Plaza. All parking is behind the building.

RESULTS: <http://live.acbl.org>

HOST HOTEL:

Americinn

5931 Fruitville Rd, Sarasota, 34212

(941) 342-8778 Doubles or Kings

\$84+/night—Bridge Rate Call Early

Unit 128

President's Message

by Jeff Overby

keysbridgeplayer@aol.com



We are looking for a few good men and women to help Unit 128 improve Bridge in Florida! Are you those MEN and WOMEN?

First, we are looking for District 9 representatives to the ACBL Board of Governors. The Board of Governors advises the ACBL Board and is composed of members of ACBL that regularly attend the NABCs and would be willing to attend a meeting or two at each one. You don't have to attend all three each year, but it would be your responsibility to find and issue a proxy to whoever is covering for you when you are unable to attend.

We are also looking to expand our partnership staff. If you are willing to work at some or all of the Regional Tournaments (Unit 128 hosts 5 of the 9 Regionals a year) please contact me. KeysBridgePlayer@aol.com.

The ACBL has revised its system of voting. In order for any member to vote on any item that would affect you, and specifically in order to receive a future ballot from ACBL, the ACBL must have your correct email address. DON'T BE DENIED YOUR RIGHT TO VOTE! REGISTER TODAY. Registration could not be easier. You can (1) CALL ACBL Club and Membership department (800)-264-2743, and they will assist you; (2) YOU CAN GO ONLINE to: ACBL.org and click on MY ACBL, LOG IN (using your password) and don't worry if you forgot the password, you can click on "Forgot Password" and the ACBL will almost instantly get back to you. Once signed in, you can update your membership with a current email address.

This year will be jammed full of bridge.

Florida Unit 128 is proud to be represented by over 320 club games, a Sectional Tournament (or more) almost every weekend, the largest STaC games in the country, and we host approximately 5 week long regional tournaments. And this year, just after Thanksgiving, we will be co-hosting the NABC in Orlando, Nov 24- Dec 4.

The Next Regional to be hosted by Florida Unit 128, The Southeasterns Regional will be held at the Marriott Coral Springs, March 28 -

April 3. Please note the dates and make your reservations now! With all the snowbirds still in Florida and those that attend this great regional annually, the attendance will be exceptional. We know you love the Marriott, with free parking, great playing space and its proximity to many restaurants.

Florida Unit 128 will be holding a special membership meeting during the Tampa Regional, June 6-12. At that meeting the membership will be asked to approve changes to the unit's by-laws, to enhance bridge in Florida.

This year, at the Daytona Beach Regional, in November, elections for our Board of Governors will occur, should we have any contested races. If you would like to run for a seat on the board, please read the bylaws, available on the unit web page, and file a "Declaration of Candidacy" with Unit Secretary, Shirley Seals, no later than May 20. Failure to timely file the "Declaration" would mean you are not eligible to run for election. A term is four years. The Board of Governors sets policy for Florida Unit 128 and also set schedules and locations for the regional tournaments that Unit 128 hosts (we don't host all nine each year).

Thank you to all that volunteer their valuable time to help promote the game of bridge that we all love. BRIDGE IS GREAT IN UNIT 128, let's all work together to make it even better! If you want to volunteer for any position or help with any aspect of Bridge, please email me. KeysBridgePlayer@aol.com

As usual the entire Unit 128 Board and I thank you for your helpful feedback.



PS. I know it's going to be a good year when I can get a 76% game playing at a local club.

72% Club

78.97%	Susan Gersony/Welton Gersony	Jonathan's Landing CC, Jupiter
78.67%	David Freyman/Peter Lavathes	Ballen Isles CC, Palm Beach Gardens
78.36%	Marcia Seslowe/Ellen Sosnow	Palm Beach CC
78.11%	Doris Berkman/Gerald Berkman	Boca Raton DBC
78.05%	Carol Bush/Barbara Rosen	Jourdan's BC, Delray Beach
77.38%	Donna Greenberg/Karen Kurzer	Jourdan's BC, Delray Beach
76.79%	Ruth Chester/Phyllis Dubetsky	Hunters Run CC, Boynton Beach
76.74%	Kie Cundey/Nancy Moore	Jupiter Island BC, Hobe Sound
76.49%	Honey Ellis/Larry Lazerow	Boca Raton DBC
76.44%	Ellie Hanlon/Mary Savko	Khatib BC, Stuart
76.35%	Carol Wiles/Rick Blume	Boca Raton DBC
76.19%	Dorothy Eveleigh/Yvonne Tarrant	Sun City Center DBA
76.19%	Vin Grande/Bill Irvine	St Catherine DBC, West Palm Beach
75.60%	Sandy Sherman/Robert Slevin	Temple Shaarei Shalom, Boynton Beach
75.46%	Honey Ellis/Barbara Saltsman	Boca Raton DBC
75.13%	Simone Liebling/Richard Rudikoff	Ballen Isles CC, Palm Beach Gardens
75.00%	Doug Carlson/Richard Dunn	Quail Ridge CC, Boynton Beach
75.00%	Sonja Gray/Elliot Slavis	Community DBC, North Palm Beach
75.00%	Marcia Teitelbaum/Dan Teitelbaum	Coral Lakes BC, Boynton Beach
74.77%	Sally Meckstroth/Jeff Meckstroth	St. Petersburg BC, Pinellas Park
74.73%	Katharine Horner/Letitia Wightman	Boca Grande DBC
74.60%	Louis Bloch/Len Nagel	Jourdan's BC, Delray Beach
74.55%	Patricia Dovell/Adrian Dovell	Gator Bridge Club, Gainesville
74.21%	Lee White/Michael White	Boca West CC, Boca Raton
74.21%	Linda Fischler/Barbara Raisner	Jourdan's BC, Delray Beach
74.17%	Sue Aronberg/Sandra Rosenberg	Temple Sinai, Delray Beach
74.11%	Shirley Weinger/Saul Horowitz	Boca Raton DBC
73.97%	Bertha Riley/Manny Mighdoll	WIN the Bridge Club, Boca Raton
73.84%	Elizabeth Young/Frederick Lavan	Bridge Deck, Naples
73.82%	Sheryl Richter/Evan Feist	Admirals Cove CC, Jupiter
73.81%	Linda Wynston/Doug Markovic	Boca Raton DBC
73.81%	Barry Berg/James Katcef	Ballen Isles CC, Palm Beach Gardens
73.81%	Maurice Greenman/Elliott Levine	Boca Raton DBC
73.81%	Rhoda Prager/Bill Irvine	Boca Raton DBC
73.75%	Arlene B Rosenthal/Edward Listengart	Broken Sound CC, Boca Raton
73.75%	Susan Ross/Kenneth Ross	Solivita BC, Poinciana
73.64%	Mike Battaglia/Steve Colletta	Jacksonville School of Bridge
73.54%	Paul Boeggeman/William Fleischman	Highlands DBC, Leesburg
73.51%	Joanne Weingold/Jack Weingold	Boca Raton DBC
73.37%	Stephan Braitman/Donald Levanthal	Ballen Isles CC, Palm Beach Gardens
73.30%	Frederick Lavan/Robert Parlin	Bridge Deck, Naples
73.24%	Ricky Dashefsky/Phyllis Dubetsky	Jourdan's BC, Delray Beach
73.21%	Sue Wallace/Donald Cohen	Temple Sinai, Delray Beach
73.09%	Lori Blackwell/Betty Walsh	Quail Ridge CC, Boynton Beach
72.92%	Evelyn Sobol/Toby Wolfe	Polo Club, Boca Raton
72.92%	Jill Weiss/Jack Eng	St Catherine DBC, West Palm Beach
72.92%	Barbara Santangelo/Jack Vollmer	Quail Ridge CC, Boynton Beach
72.92%	Carole Bondi/Christine Kurtz	Bonita Bay CC, Bonita Springs
72.83%	Andre Frenette/Thomas Santarelli	Pelican Bay DBC, Naples
72.75%	Patricia Dovell/Adrian Dovell	Gainesville DBC
72.73%	Alina Castells/Michael Yau	Friendship Club, Coral Gables
72.62%	Carol Brooks/Nicki Caplan	Temple Shaarei Shalom, Boynton Beach

72.62%	Doris Berkman/Gerald Berkman	Boca Raton DBC
72.45%	Elaine Holmes/Connie Kirk	Community DBC #2, North Palm Beach
72.44%	Laura Lipman/Joy Phillips	Fort Myers BC
72.40%	Allison Howard/Mike Cappelletti	Gleneagles CC, Delray Beach
72.32%	Sue Epple/Heather Trivus	Sun City Center DBA
72.24%	Rhoda Kratenstein/Janice Seamon-Molson	Boca Raton DBC
72.22%	Anne Graziano/Franni Ridder	Jupiter Island BC, Hobe Sound
72.22%	Harriet Gross/Carrol Zazik	Frenchmans Creek Club, Palm Beach Gardens
72.22%	Barry Davis/Hank Parker	Bonita Bridge at Wiggins, Naples
72.16%	Dan Candee/Mel Cohen	Jourdan's BC, Delray Beach
72.08%	Laura Selling/Sherwood Selling	Solivita BC, Poinciana
72.05%	Paula Mann/Larry Mann	Boca Raton DBC
72.02%	John Brady/Bruce Ohmann	Palm Coast DBC
72.02%	Norman Alper/Marvin Pomerantz	Boca Raton DBC

SUBMIT 72% CLUB GAMES

by email to: unit128sbn@gmail.com

All submissions must contain THE FOLLOWING INFORMATION:

1. the club's full name
2. the town in which the club is located
3. the director's name
4. the names of both partners
5. an electronic link to the club results for the day of the big game

No Club Name, No Club Location, No Listing, So Sorry.

No 72% games in a field smaller than six tables will be published. Please do not send us any.

BOARD MEMBERS – UNIT 128

PRESIDENT

Jeff Overby
KeysBridgePlayer@aol.com
 Fax: 305-296-0207

VICE-PRESIDENT

Harriet Morris
forever2@bellsouth.net
 Cell: 404-731-4259

SECRETARY

Shirley Seals
 904-285-7767
ShirleySealsFL@aol.com

TREASURER

Marshall Hall
 390 NW 53rd St.,
 Boca Raton, FL 33487
newburyco@msn.com
 561-367-9080

BOARD MEMBERS

Charles Gill
 727-363-1136
cfgill@verizon.net

Bruce Greenspan
 617-510-8405
greenspanbridge@yahoo.com

Adrienne Muslin

amuzz@aol.com
 813-286-8126

Charlene Predmest

Cell: 561-756-4444
charlenepredmest@yahoo.com

Betty Sandifer

386-795-7423
bsandifer@cfl.rr.com

Rawy Shediac

(203) 249-7899 (winter)
 (305) 407-3977 (summer)
rshediac@me.com

Marianne Timmons

727-725-3006
mtimm34695@aol.com

Jay Whipple III

jay3@ospreypartners.com

Ray Wise

813-215-6623

COMPTROLLER

Sherry Potter
 4143 Richmond Park Dr. E.
 Jacksonville, FL 32224
Unit128books@aol.com
 904-992-7102

ADVISOR

Dale Rands
drands@rankauf.com
 248-762-5595

Staff and Advisors:

EXECUTIVE MANAGER

Shannon Cappelletti
shannoncapp@gmail.com
 423-400-0269

LEGAL COUNSEL

Craig Hemphill
RCraigH@aol.com

COMMUNICATIONS CHAIR

(Website and SBN)
 Muriel Altus
 813-810-9067
unit128sbn@gmail.com